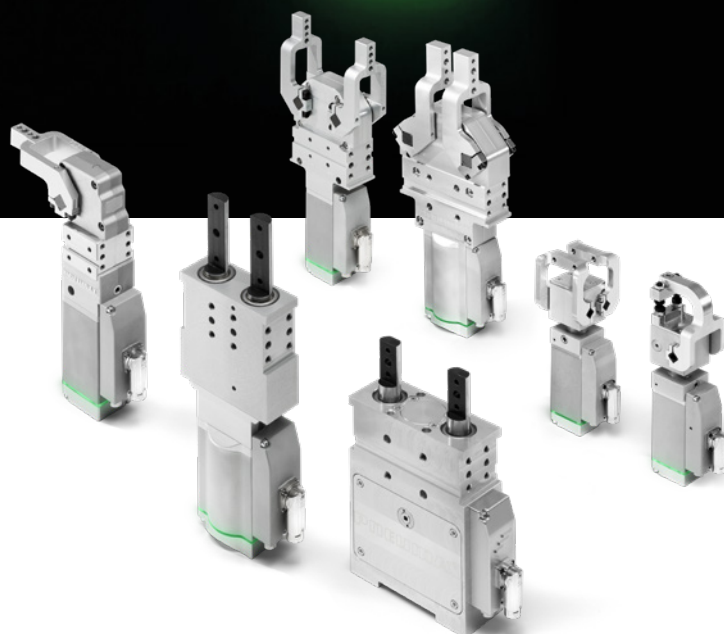




PNEUMAX



E-SERIES

ELECTRIC DEVICES
FOR BIW APPLICATIONS



PNEUMAX AUTOMOTIVE

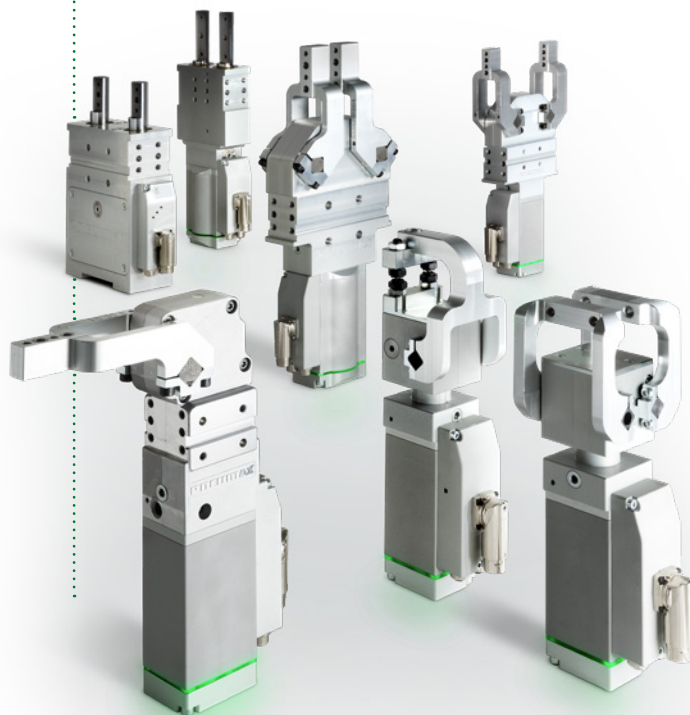
In order to face the current challenges in BIW production lines, **Pneumax's product range is constantly evolving, with a specific focus on sustainability, flexibility of the control systems and energy efficiency.**

Today, in addition to the consolidated range of pneumatic solutions, Pneumax further expands its offer by introducing a **new line of electrical devices.**

Thanks to the experience gained in the industrial automation sector and a constant commitment to innovation, the company establishes itself as a reference point not only in pneumatics, but also in electrical integration, offering advanced and high-performance solutions to meet the needs of a constantly evolving market.

The ultimate clamping technology **ELECTRIC RANGE**

- Power clamps
- Nano power clamps
- Power clamps with dual arm
- Retractable locating pin packages
- Retractable locating pin packages with dual rods
- Retractable locating pin packages with toggle lock
- Gripper clamps

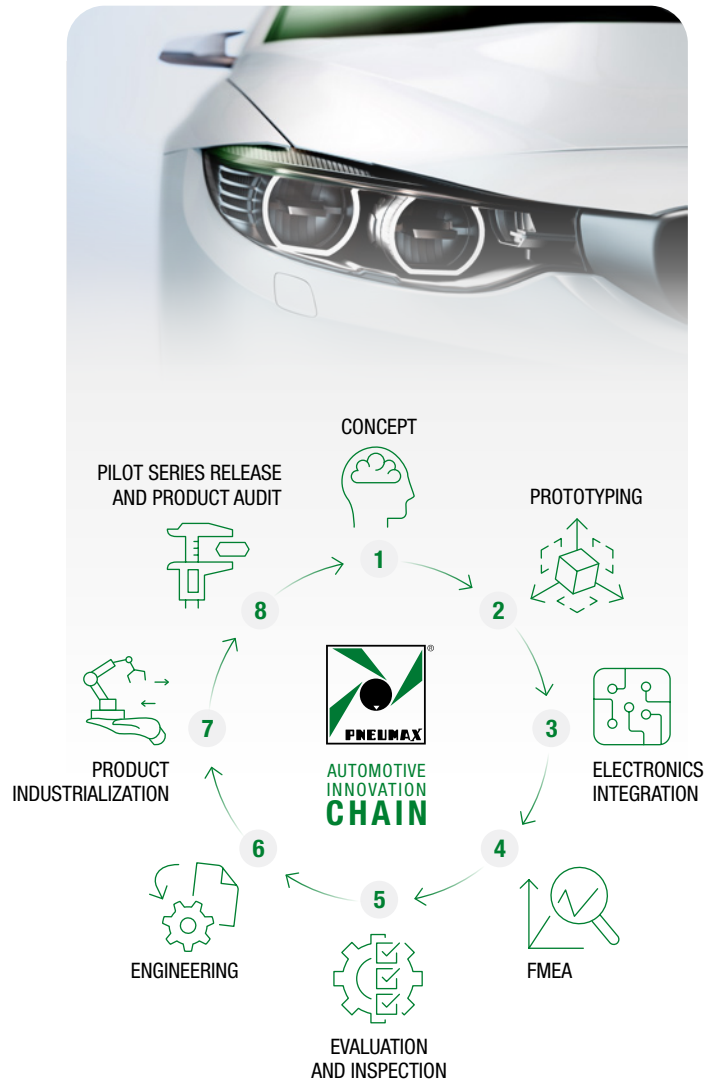


COMPONENTS AND SYSTEMS FOR BODY IN WHITE APPLICATIONS

The Automotive division offers a complete range of products dedicated to the production lines of the industry, with a special focus on **Body in White applications**.

The Pneumax range includes clamping units, pin packages, gripper units, power pivots and complete multi axes positioning systems developed to guarantee maximum reliability and the highest accuracy and repeatability.

Each product series integrates extremely **innovative technical solutions**, without compromising on compliance with the various international mounting standards. Special attention was placed in energy efficiency, with devices that allow the highest savings offered on the market. Pneumax's extensive network across the globe allows optimal and coordinated management of projects with automotive companies internationally. Every stage of production and product testing is carried out in our specially equipped departments in Lurano to ensure maximum reliability and the highest quality standards.



Safety & green Automation

- Operator and equipment safety
- Flexibility and reduction of setup times
- Connectivity
- Energy savings
- Standardisation



ELECTRIC POWER CLAMPS



From size 25 to size 80

Smart devices enabling condition monitoring

- Industry proven toggle linkage
- Same functional dimensions and parameters of pneumatic clamps for complete interchangeability
- Stepless adjustable opening angle
- Optimally accessible manual unlock mechanism for emergency situations and as manual operation
- Backlash-free trapezoidal screw; the irreversibility of the screw allows for an integrated auto-retain of the open position and enhances the load control
- Brushless low voltage motors with absolute encoder
- Extra-compact drive can be rotated by 180° without disassembling the clamp
- Quick installation per daisy-chain

Condition monitoring

- Obstacle detection
- Part presence; Part missing
- Multiple part detection

ELECTRIC POWER CLAMPS WITH DUAL ARMS



Size 40 and 63

Smart devices with two integrated toggle linkages for the simultaneous clamping of two workpieces

- Same functional dimensions and parameters of pneumatic clamps for complete interchangeability
- Stepless adjustable opening angle
- Optimally accessible manual unlock mechanism for emergency situations and as manual operation
- Backlash-free trapezoidal screw; the irreversibility of the screw allows for an integrated auto-retain of the open position and enhances the load control
- Brushless low voltage motors with absolute encoder
- Extra-compact drive can be rotated by 180° without disassembling the clamp

Condition monitoring

- Obstacle detection
- Part presence; Part missing
- Multiple part detection

ELECTRIC RETRACTABLE LOCATING PIN PACKAGES



Single rod and dual rods
Toggle linkage version

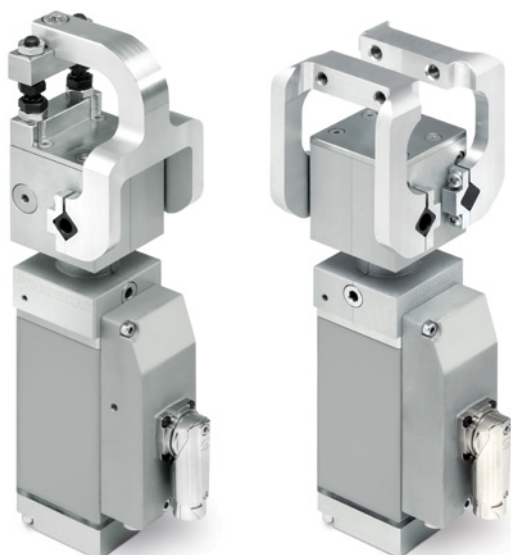
Crossed-rollers guides prevent deflection of the rods

- Same functional dimensions and parameters of pneumatic pin packages
- Adjustable strokes up to 60 mm
- Brushless low voltage motors with absolute encoder
- Extra-compact drive can be rotated by 180° without disassembling the pin packages
- Optimally accessible manual unlock mechanism for emergency situations, which can also be used as manual operation

Condition monitoring

- Obstacle detection

ELECTRIC GRIPPER CLAMPS



Single jaw and double jaws

Smart electric devices for sheet metal handling

- Stepless adjustable opening angle
- The drive can be installed on all 4 sides without disassembling the clamp
- Completely enclosed design
- Optimally accessible manual unlock mechanism for emergency situations and as manual operation
- Backlash-free trapezoidal screw; the irreversibility of the screw allows for an integrated auto-retain of the open position and enhances the load control
- Brushless low voltage motors with absolute encoder



PNEUMAX

PNEUMAX S.p.A.
Via Cascina Barbellina, 10
24050 Lurano (BG) - Italy
Ph. +39 035 41 92 777
automotive@pneumaxspa.com
www.pneumaxspa.com