



## Precision micro pressure regulator



- › Maintains accurate pressure settings
- › Sensitive to over pressure
- › Lockable adjusting knob, simply press downwards to engage the locked position
- › Aluminium body
- › Neck ring nut for panel mounting
- › Controlled relief
- › Compact and light weight design

2

AIR TREATMENT

### Technical characteristics

Size	Size 1
Body and connections type	Aluminium body, integrated aluminium connections
IN / OUT connections	G1/8"
Assembly configuration	Stand alone With fixing bracket With fixing bracket
Assembly position	indifferent
Fluid	20µ filtered air and preferably non lubricated
Air flow with inlet pressure 10 bar (Nl/min)	4
Pressure range (bar)	0 - 2 / 0 - 4 / 0 - 8
Regulation	Manual push and lock with pressure
Pressure measurement	G1/8" Pressure gauge connection port
Max. fittings torque IN / OUT connections (Nm)	G1/8" metal: 15

### Operational characteristics

Size	Size 1
Maximum working pressure (bar)	12
Minimum working pressure (bar)	OUT pressure + 1 bar
Working temperature (°C)	-5 ... +70
Sensitivity	±0.2% F.S
Repeatability	±0.5% F.S
Hysteresis	± 0.01 bar

### Weights

Size	Size 1
Aluminium body version (g)	230

### Order codes

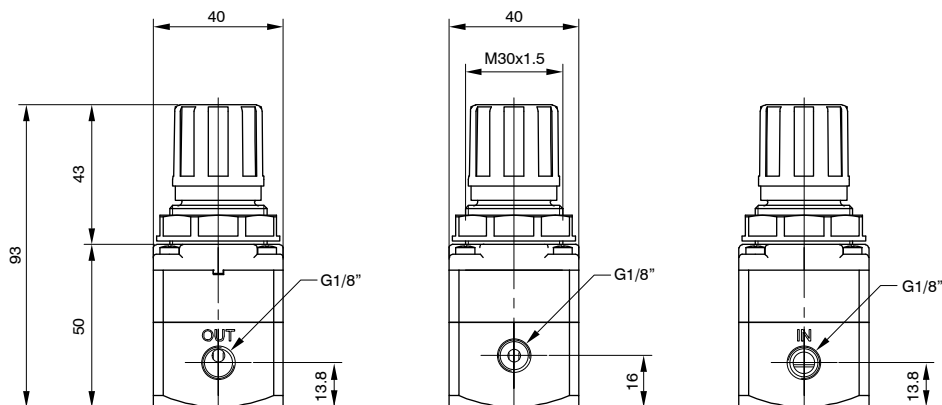
RP17 1A PR B V

Size, body and connections	
1A	Aluminium body, connection G1/8"
Pressure range	
A	0 - 2 bar
B	0 - 4 bar
C	0 - 8 bar
Knob colour	
V	Green knob (RAL6032)
G	Grey knob (RAL7004)

**Example: RP171APRBV**

Precision micro pressure regulator, aluminium body, G1/8" connections, 0-4 bar, green knob

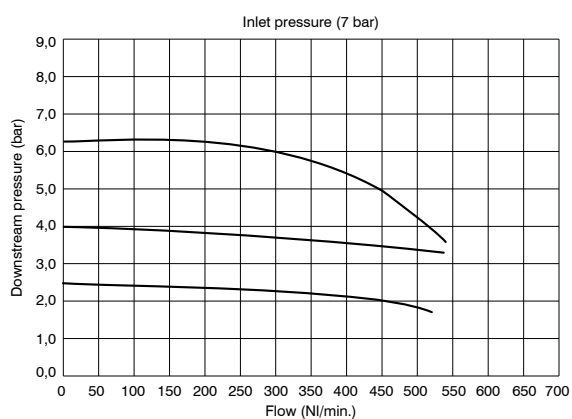
## Dimensions



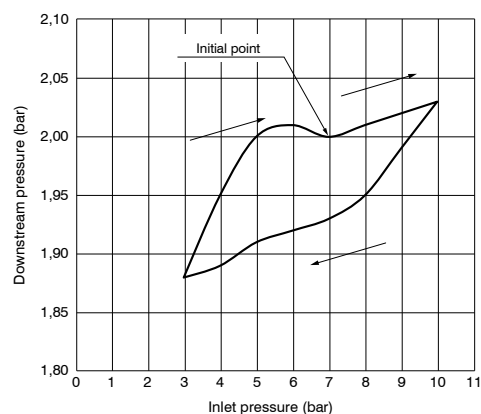
### Size 1

## Characteristic curves

### Flow rate curves



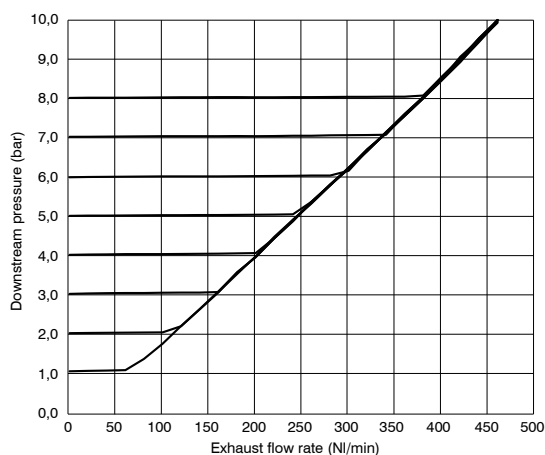
### Adjustment characteristic



### Size 1

### Size 1

### Exhaust flow rate curves



### Size 1