

General

Pneumatic grippers from the 6300 series are typically used in complex systems such as assembly machines, robots, manipulators etc.

This series covers the wide range requirements of this sector, allowing a variety of applications.

The range includes grippers equipped with holding fingers operating from -10° to $+30^{\circ}$ degrees, with 180° degree opening, or a parallel guided gripper with great rigidity throughout the stroke.

The parallel grippers cater for larger openings (three different strokes for each diameter) with synchronised operation via a pinion-rack system with high strength thanks to a double piston mechanism.

For the typical application of supplying a piece upon to a machine tool, make provision for an automatic three-pronged movement carried along by a wedge mechanism, containing the elevated force dimensions.

The holding fingers can have a tolerance reference as a precise fixing device for the catching mechanism. Every type of "hand" offers different functional levels of performance at varying diameters and lengths, secondary to the application by the "fingers".



Ordering Code

6311.Ø.D.

- 10
- 16
- 20
- 25
- 32
- 40

Ordering code options	Stroke					
		20	30	40	50	70
1	40	60	80	100	120	160
2	60	80	100	120	160	200
	Ø10	Ø16	Ø20	Ø25	Ø32	Ø40
	Bore					

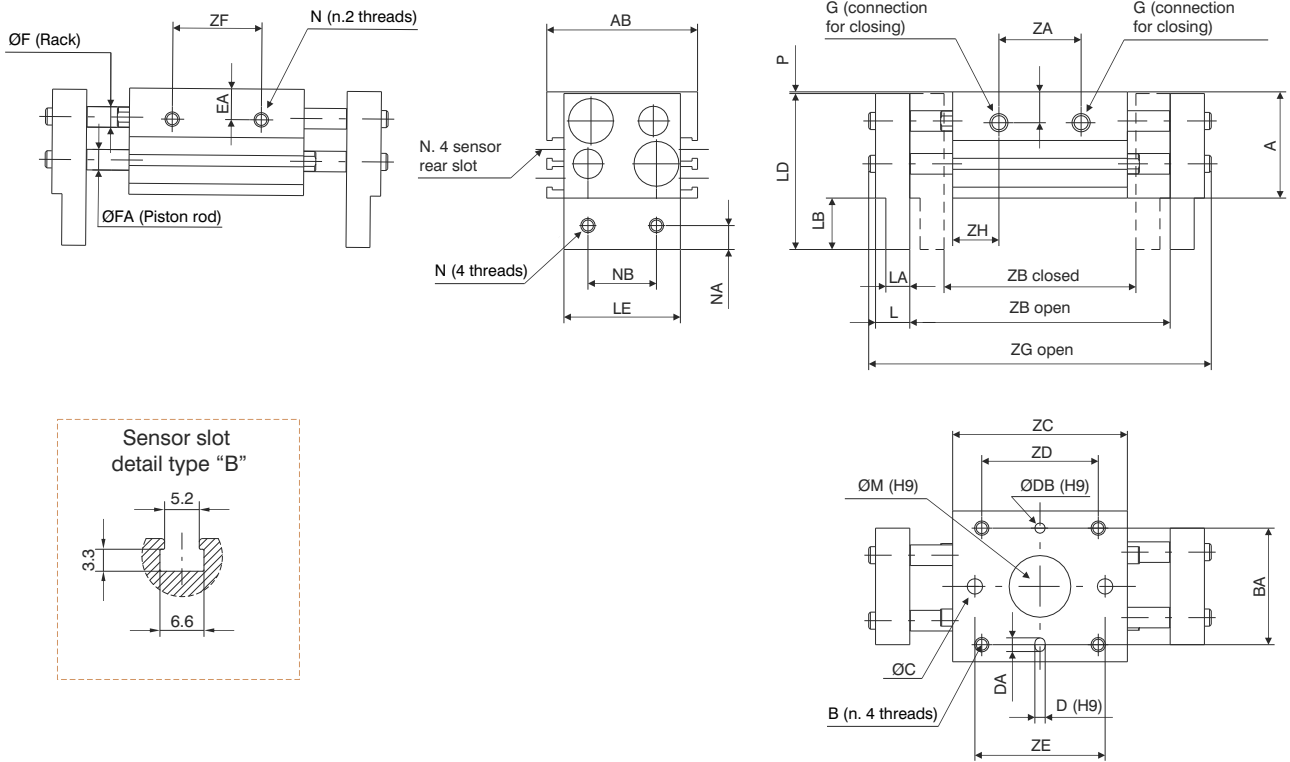
Construction characteristics

Body	aluminium
Piston	brass
Fingers	aluminium
Rod	steel
Rack	steel
Pinion	steel

Technical characteristics

Function	double acting
Fluid	filtered and non lubricated air
Working pressure	Ø10: 1.5 - 6 bar - Ø16 - 40: 1 - 6 bar
Working temperature	-5°C - +70°C

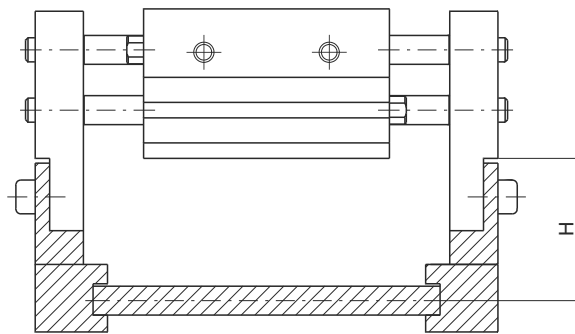
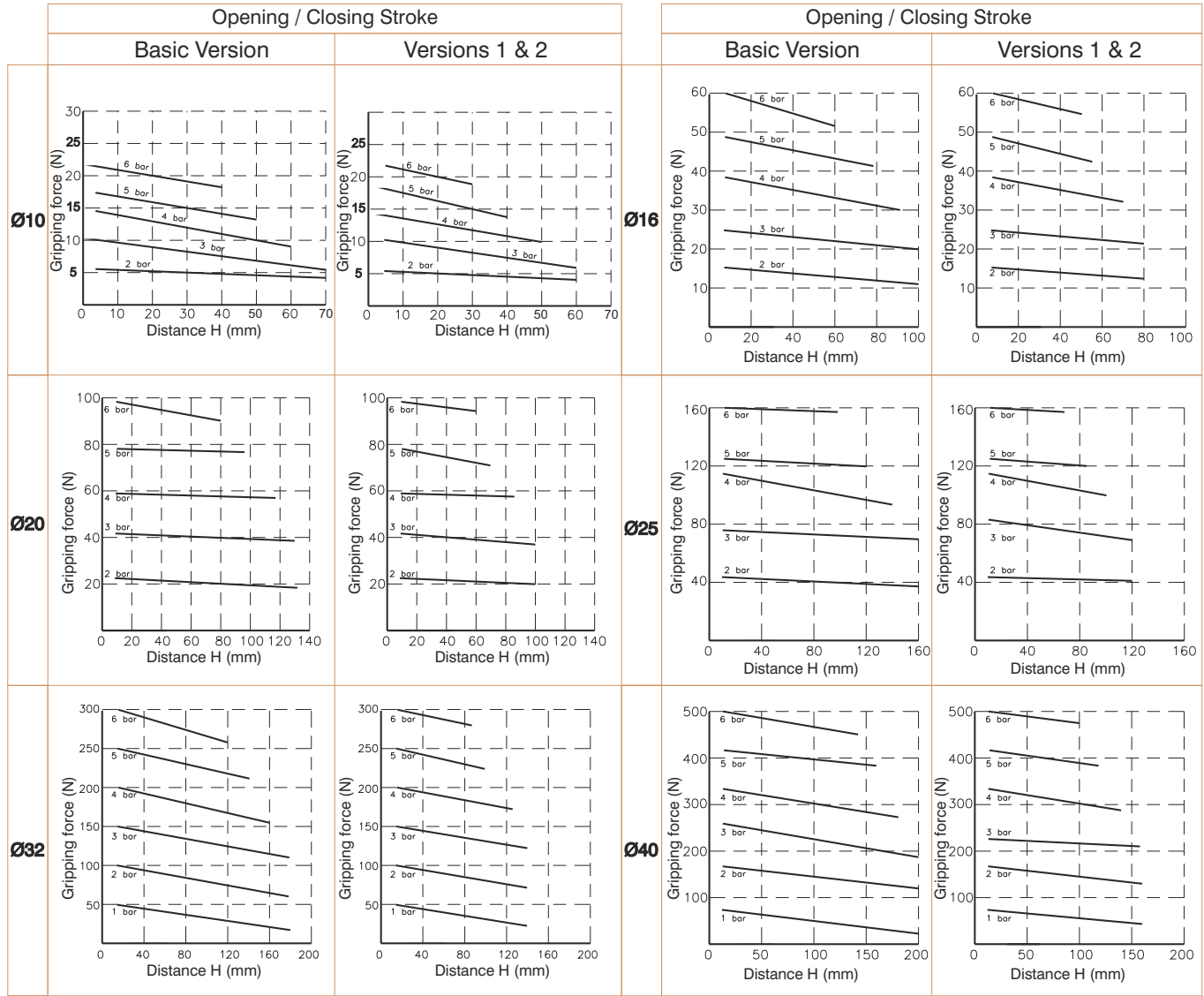
Model	Diameter (mm)	Max.operating frequency cycles/min.	Model	Diameter (mm)	Max.operating frequency cycles/min.
6311.10.D	10	60	6311.25.D	25	60
6311.10.D.1		40	6311.25.D.1		40
6311.10.D.2			6311.25.D.2		
6311.16.D	16	60	6311.32.D	32	30
6311.16.D.1		40	6311.32.D.1		20
6311.16.D.2			6311.32.D.2		
6311.20.D	20	60	6311.40.D	40	30
6311.20.D.1		40	6311.40.D.1		20
6311.20.D.2			6311.40.D.2		



Bore	Ø10	Ø16	Ø20	Ø25	Ø32	Ø40													
A	31	39	46	52	68	79													
AB	44	55	65	76	82	98													
B	M4x0.7	M5x0.8	M6x1	M8x1.25	M8x1.25	M10x1.5													
	Useful depth	8	10	12	16	20													
BA	34	42	52	62	64	76													
ØC	4.5	5.5	6.6	9	/	/													
D ^{H9}	3	3	4	4	6	6													
	Useful depth	3	3	4	4.5	8													
DA	4	4	5	5	7	7													
ØDB ^{H9}	3	3	4	4	6	6													
	Useful depth	3	3	4	4.5	8													
E	M4x0.7	M5x0.8	M6x1	M8x1.25	M8x1.25	M10x1.5													
	Useful depth	5	7	7	7	11													
EA	9	10	11	12.5	22	28													
ØF	6	8	10	12	14	16													
FA	6	8	10	12	16	20													
G	M5x0.8	M5x0.8	M5x0.8	M5x0.8	G1/8	G1/8													
GB	9	10	11	16	16	18													
L	10	13	17	21	24	28													
LA	7	9	12.5	14	15	18													
LB	15	19	24	29	32	38													
LD	45.5	57.5	69	80	100	117													
LE	34	43	54	64	70	86													
ØM ^{H9}	18	23	27	32	35	40													
	Useful depth	1.5	1.5	1.5	1.5	1.5													
N	M4x0.7	M5x0.8	M6x1	M8x1.25	M10x1.5	M12x1.75													
NA	7	8	10	12	15	18													
NB	20	25	30	40	50	60													
P	0.5	0.5	1	1	1	1													
ZA	24	39	57	26	50	70	32	68	88	38	86	104	56	104	148	72	130	170	
	ZB	closed	56	78	96	68	110	130	82	142	162	100	182	200	150	198	242	188	246
	open	76	118	156	98	170	210	122	222	262	150	282	320	220	318	402	288	406	486
ZC	51	67	85	60	90	110	71	113	133	88	142	160	110	158	202	148	206	246	
ZD	34	52	70	45	75	95	58	100	120	70	124	142	86	134	178	116	174	214	
ZE	38	54	72	40	70	90	54	96	116	66	120	138	/	/	/	/	/	/	
ZF	26	42	60	28	58	78	38	80	100	48	102	120	60	108	152	80	138	178	
ZG	open	100	142	180	128	200	240	160	260	300	196	328	366	272	370	454	348	466	546
	ZH	13.5	14	14	17	20	20	19.5	22.5	22.5	25	28	28	28	28	28	28	28	37
Weight (gr.)	280	350	430	600	800	950	1000	1500	1700	1700	2500	2800	2900	3800	4700	5300	6850	7900	
	20	40	60	30	60	80	40	80	100	50	100	120	70	120	160	100	160	200	

Stroke

Holding force



5