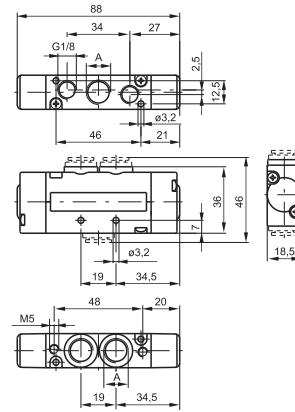


Pneumatic - Spring

Ordering code
241 .52.00.19
CONNECTIONS "A"
1 = G1/4"
5 = G1/8"
6 = quick fitting tube Ø6
8 = quick fitting tube Ø8



Weight gr. 155
Minimum piloting pressure 2 bar

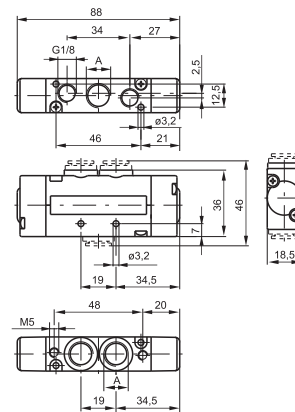


For dimension "A" see ordering code

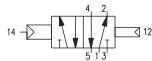
Operational characteristic	Fluid	Max working pressure (bar)	Temperature °C		Flow rate at 6 bar with Δp=1 (NI/min)	Orifice size (mm)	Working ports size	Pilot ports size
	Filtered and lubricated air or not		Min. -5°C	Max. +50°C				
	Filtered and lubricated air or not	10 bar	Min. -5°C	Max. +50°C	800 NI/min	mm 7	G1/8"-G1/4" tube Ø6-tube Ø8	M5

Pneumatic - Differential / Differential external

Ordering code
241 .52.00.16
CONNECTIONS "A"
1 = G1/4"
5 = G1/8"
6 = quick fitting tube Ø6
8 = quick fitting tube Ø8
PILOTING
16 = Pneumatic - Differential
17 = Pneumatic - Differential ext.



Weight gr. 155
Minimum piloting pressure 2 bar

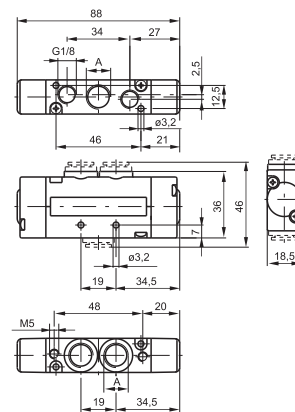


For dimension "A" see ordering code

Operational characteristic	Fluid	Max working pressure (bar)	Temperature °C		Flow rate at 6 bar with Δp=1 (NI/min)	Orifice size (mm)	Working ports size	Pilot ports size
	Filtered and lubricated air or not		Min. -5°C	Max. +50°C				
	Filtered and lubricated air or not	10 bar	Min. -5°C	Max. +50°C	800 NI/min	mm 7	G1/8"-G1/4" tube Ø6-tube Ø8	M5

Pneumatic - Pneumatic

Ordering code
241 .52.00.18
CONNECTIONS "A"
1 = G1/4"
5 = G1/8"
6 = quick fitting tube Ø6
8 = quick fitting tube Ø8



Weight gr. 155
Minimum piloting pressure 1,5 bar



For dimension "A" see ordering code

Operational characteristic	Fluid	Max working pressure (bar)	Temperature °C		Flow rate at 6 bar with Δp=1 (NI/min)	Orifice size (mm)	Working ports size	Pilot ports size
	Filtered and lubricated air or not		Min. -5°C	Max. +50°C				
	Filtered and lubricated air or not	10 bar	Min. -5°C	Max. +50°C	800 NI/min	mm 7	G1/8"-G1/4" tube Ø6-tube Ø8	M5



Miniature solenoid - Spring / Differential

Ordering code

241C.52.00.P.V

CONNECTIONS "A"

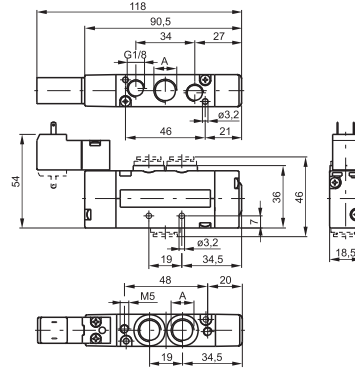
- 1 = G1/4"
- 5 = G1/8"
- 6 = quick fitting tube Ø6
- 8 = quick fitting tube Ø8

PILOTING

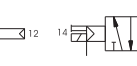
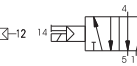
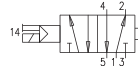
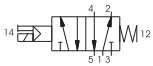
- 39 = Sv. - Spring
- 29 = Sv. ext. - Spring
- 36 = Sv. - Diff./al
- 37 = Sv. ext. - Diff./al ext.
- 26 = Sv. ext. - Diff./al
- 27 = Sv. ext. - Diff./al ext.

COIL VOLTAGE

- 01 = 12V DC
- 02 = 24V DC
- 05 = 24V AC
- 06 = 110V AC
- 07 = 220V AC
- 08 = 24V DC 1 Watt
- 09 = 24V DC Earth Faston
- 11 = 12V DC Downward
- 12 = 24V DC Downward
- 15 = 24V AC Downward
- 16 = 110V AC Downward
- 17 = 220V AC Downward
- 18 = 24V DC 1 Watt Downward
- 19 = 24V DC Earth Faston Downward



For dimension "A" see ordering code Weight gr. 195
Minimum working pressure 2 bar



Operational characteristic

Operational characteristic	Fluid	Max working pressure (bar)	Temperature °C		Flow rate at 6 bar with Δp=1 (NI/min)	Orifice size (mm)	Working ports size	Pilot ports size
		Filtered and lubricated air or not	10 bar	Min. -5°C	Max. +50°C	800 NI/min	mm 7	G1/8"-G1/4" tube Ø6-tube Ø8

Miniature solenoid - Miniature solenoid

Ordering code

241C.52.00.P.V

CONNECTIONS "A"

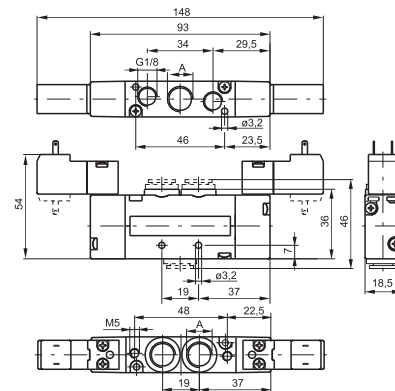
- 1 = G1/4"
- 5 = G1/8"
- 6 = quick fitting tube Ø6
- 8 = quick fitting tube Ø8

PILOTING

- 35 = Sol. - Sol.
- 24 = Sol. ext. - Sol. ext.

COIL VOLTAGE

- 01 = 12V DC
- 02 = 24V DC
- 05 = 24V AC
- 06 = 110V AC
- 07 = 220V AC
- 08 = 24V DC 1 Watt
- 09 = 24V DC Earth Faston
- 11 = 12V DC Downward
- 12 = 24V DC Downward
- 15 = 24V AC Downward
- 16 = 110V AC Downward
- 17 = 220V AC Downward
- 18 = 24V DC 1 Watt Downward
- 19 = 24V DC Earth Faston
- 19 = 24V DC Earth Faston



Weight gr. 225
Minimum working pressure 1,5 bar



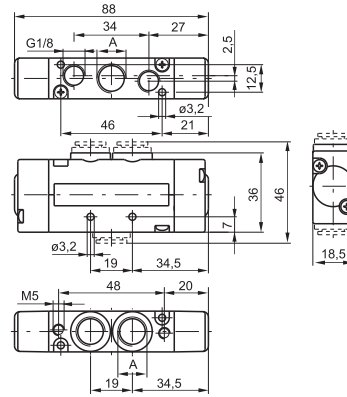
For dimension "A" see ordering code

Operational characteristic

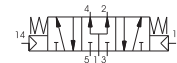
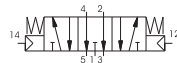
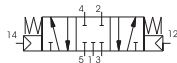
Operational characteristic	Fluid	Max working pressure (bar)	Temperature °C		Flow rate at 6 bar with Δp=1 (NI/min)	Orifice size (mm)	Working ports size	Pilot ports size
		Filtered and lubricated air or not	10 bar	Min. -5°C	Max. +50°C	800 NI/min	mm 7	G1/8"-G1/4" tube Ø6-tube Ø8

Pneumatic - Pneumatic

Ordering code
241 C . 53 . F . 18
CONNECTIONS "A"
1 = G1/4"
5 = G1/8"
6 = quick fitting tube Ø6
8 = quick fitting tube Ø8
FUNCTION
31 = Closed centres
32 = Open centres
33 = Pressured centres



Weight gr. 165
Minimum working pressure 3 bar

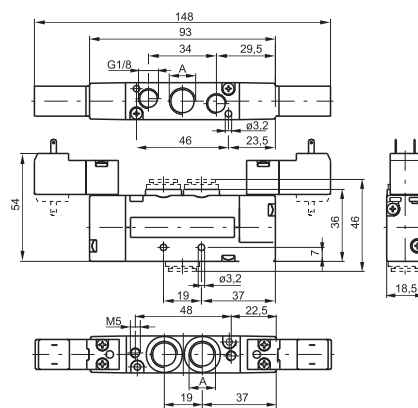


For dimension "A" see ordering code

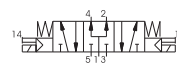
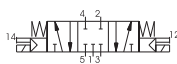
Operational characteristic	Fluid	Max working pressure (bar)	Temperature °C		Flow rate at 6 bar with Δp=1 (NI/min)	Orifice size (mm)	Working ports size	Pilot ports size
	Filtered and lubricated air or not		10 bar	Min. -5°C	Max. +50°C	650 NI/min	mm 7	G1/8"-G1/4" tube Ø6-tube Ø8

Miniature solenoid - Miniature solenoid

Ordering code
241 C . 53 . F . P . V
CONNECTIONS "A"
1 = G1/4"
5 = G1/8"
6 = quick fitting tube Ø6
8 = quick fitting tube Ø8
FUNCTION
31 = Closed centres
32 = Open centres
33 = Pressured centres
PILOTING
24 = Sol. ext. - Sol. ext.
35 = Sol. - Sol.
COIL VOLTAGE
01 = 12V DC
02 = 24V DC
05 = 24V AC
06 = 110V AC
07 = 220V AC
08 = 24V DC 1 Watt
09 = 24V DC Earth Faston
11 = 12V DC Downward
12 = 24V DC Downward
15 = 24V AC Downward
16 = 110V AC Downward
17 = 220V AC Downward
18 = 24V DC 1 Watt Downward
19 = 24V DC Earth Faston Downward



Weight gr. 235
Minimum working pressure 3 bar



For dimension "A" see ordering code

Operational characteristic	Fluid	Max working pressure (bar)	Temperature °C		Flow rate at 6 bar with Δp=1 (NI/min)	Orifice size (mm)	Working ports size	Pilot ports size
	Filtered and lubricated air or not		10 bar	Min. -5°C	Max. +50°C	650 NI/min	mm 7	G1/8"-G1/4" tube Ø6-tube Ø8

2

Pneumatic - Pneumatic

Ordering code

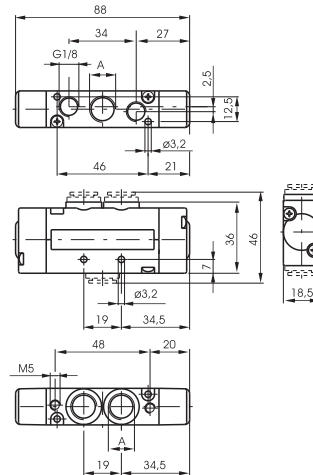
241 **C**.62.**F**.18

CONNECTIONS "A"

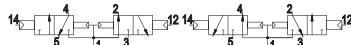
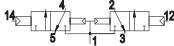
- 1 = G1/4"
- 5 = G1/8"
- 6 = quick fitting tube Ø6
- 8 = quick fitting tube Ø8

FUNCTION

- 44 = 2 Coils 3/2 NC
- 45 = 1 Coil 3/2 NC (14) + 1 Coil 3/2 NO (12)
- 55 = 2 Coils 3/2 NO
- 54 = 1 Coil 3/2 NO (14) + 1 Coil 3/2 NC (12)



Weight gr. 170
Minimum working pressure 3 bar



For dimension "A" see ordering code

Operational characteristic

Operational characteristic	Fluid	Max working pressure (bar)	Temperature °C		Flow rate at 6 bar with Δp=1 (NI/min)	Orifice size (mm)	Working ports size
	Filtered and lubricated air or not		10 bar	Min. -5°C	Max. +50°C	450 NI/min	mm 7

Miniature solenoid - Miniature solenoid

Ordering code

241 **C**.62.**F**.35.**V**

CONNECTIONS "A"

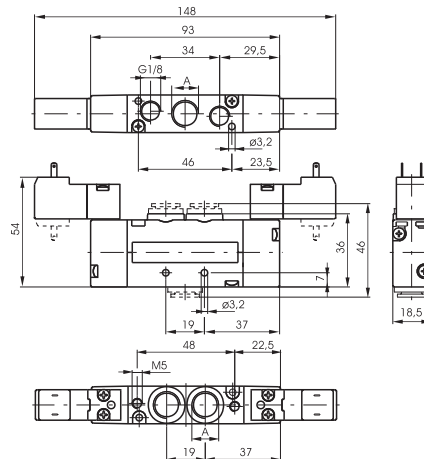
- 1 = G1/4"
- 5 = G1/8"
- 6 = quick fitting tube Ø6
- 8 = quick fitting tube Ø8

FUNCTION

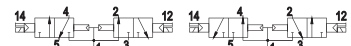
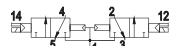
- 44 = 2 Coils 3/2 NC
- 45 = 1 Coil 3/2 NC (14) + 1 Coil 3/2 NO (12)
- 55 = 2 Coils 3/2 NO
- 54 = 1 Coil 3/2 NO (14) + 1 Coil 3/2 NC (12)

COIL VOLTAGE

- 01 = 12V DC
- 02 = 24V DC
- 05 = 24V AC
- 06 = 110V AC
- 07 = 220V AC
- 08 = 24V DC 1 Watt
- 09 = 24V DC Earth Faston
- 11 = 12V DC Downward
- 12 = 24V DC Downward
- 15 = 24V AC Downward
- 16 = 110V AC Downward
- 17 = 220V AC Downward
- 18 = 24V DC 1 Watt Downward
- 19 = 24V DC Earth Faston Downward



Weight gr. 250
Minimum working pressure 3 bar



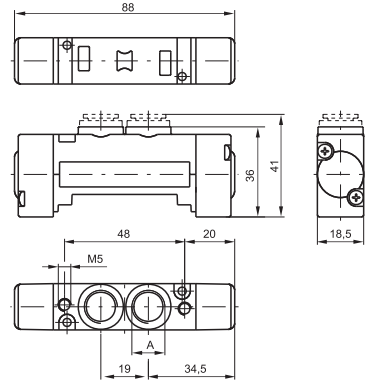
For dimension "A" see ordering code

Operational characteristic

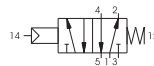
Operational characteristic	Fluid	Max working pressure (bar)	Temperature °C		Flow rate at 6 bar with Δp=1 (NI/min)	Orifice size (mm)	Working ports size
	Filtered and lubricated air or not		10 bar	Min. -5°C	Max. +50°C	450 NI/min	mm 7

Pneumatic - Spring

Ordering code
243C.52.00.19
CONNECTIONS "A"
1 = G1/4"
5 = G1/8"
6 = quick fitting tube Ø6
8 = quick fitting tube Ø8



Weight gr. 105
Minimum piloting pressure 2 bar

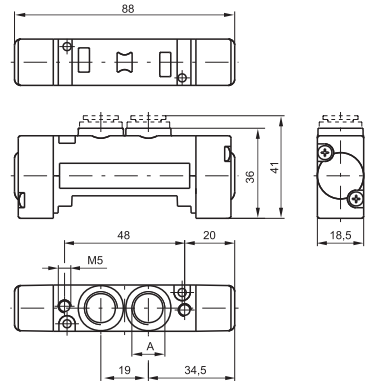


For dimension "A" see ordering code

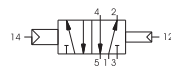
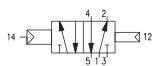
Operational characteristic	Fluid	Max working pressure (bar)	Temperature °C		Flow rate at 6 bar with Δp=1 (NI/min)	Orifice size (mm)	Working ports size	Pilot ports size
	Filtered and lubricated air or not		Min. -5°C	Max. +50°C				
	Filtered and lubricated air or not	10 bar	Min. -5°C	Max. +50°C	800 NI/min	mm 7	G1/8"-G1/4" tube Ø6-tube Ø8	M5

Pneumatic - Differential / Differential external

Ordering code
243C.52.00.P
CONNECTIONS "A"
1 = G1/4"
5 = G1/8"
6 = quick fitting tube Ø6
8 = quick fitting tube Ø8
PILOTING
16 = Pneumatic - Differential
17 = Pneumatic Differential ext.



Weight gr. 105
Minimum piloting pressure 2 bar

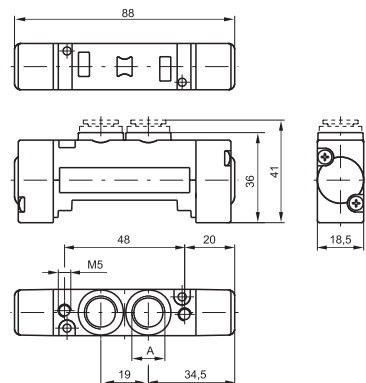


For dimension "A" see ordering code

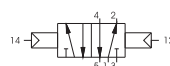
Operational characteristic	Fluid	Max working pressure (bar)	Temperature °C		Flow rate at 6 bar with Δp=1 (NI/min)	Orifice size (mm)	Working ports size	Pilot ports size
	Filtered and lubricated air or not		Min. -5°C	Max. +50°C				
	Filtered and lubricated air or not	10 bar	Min. -5°C	Max. +50°C	800 NI/min	mm 7	G1/8"-G1/4" tube Ø6-tube Ø8	M5

Pneumatic - Pneumatic

Ordering code
243C.52.00.18
CONNECTIONS "A"
1 = G1/4"
5 = G1/8"
6 = quick fitting tube Ø6
8 = quick fitting tube Ø8



Weight gr. 105
Minimum piloting pressure 1,5 bar



For dimension "A" see ordering code

Operational characteristic	Fluid	Max working pressure (bar)	Temperature °C		Flow rate at 6 bar with Δp=1 (NI/min)	Orifice size (mm)	Working ports size	Pilot ports size
	Filtered and lubricated air or not		Min. -5°C	Max. +50°C				
	Filtered and lubricated air or not	10 bar	Min. -5°C	Max. +50°C	800 NI/min	mm 7	G1/8"-G1/4" tube Ø6-tube Ø8	M5



Miniature solenoid - Spring / Differential

Ordering code

243C.52.00.P.V

CONNECTIONS "A"

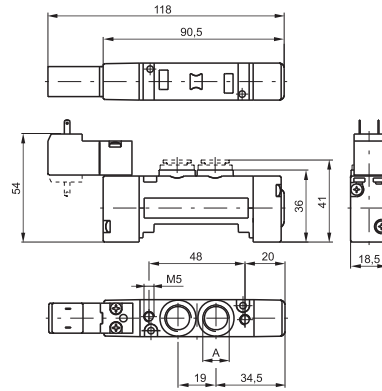
- 1 = G1/4"
- 5 = G1/8"
- 6 = quick fitting tube Ø6
- 8 = quick fitting tube Ø8

PILOTING

- 39 = Sol. - Spring
- 29 = Sol. ext. - Spring
- 36 = Sol. - Differ.
- 37 = Sol. ext. - Differ. ext.
- 26 = Sol. ext. - Differ.
- 27 = Sol. ext. - Differ. ext.

COIL VOLTAGE

- 01 = 12V DC
- 02 = 24V DC
- 05 = 24V AC
- 06 = 110V AC
- 07 = 220V AC
- 08 = 24V DC 1 Watt
- 09 = 24V DC Earth Faston
- 11 = 12V DC Downward
- 12 = 24V DC Downward
- 15 = 24V AC Downward
- 16 = 110V AC Downward
- 17 = 220V AC Downward
- 18 = 24V DC 1 Watt Downward
- 19 = 24V DC Earth Faston Downward



For dimension "A" see ordering code Weight gr. 140
Minimum working pressure 2 bar



Operational characteristic

Fluid	Max working pressure (bar)	Temperature °C		Flow rate at 6 bar with Δp=1 (NI/min)	Orifice size (mm)	Working ports size	Pilot ports size
		Min. -5°C	Max. +50°C				
Filtered and lubricated air or not	10 bar	Min. -5°C	Max. +50°C	800 NI/min	mm 7	G1/8"-G1/4" tube Ø6-tube Ø8	M5

Miniature solenoid - Miniature solenoid

Ordering code

243C.52.00.P.V

CONNECTIONS "A"

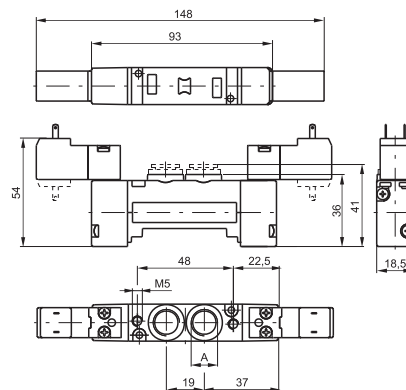
- 1 = G1/4"
- 5 = G1/8"
- 6 = quick fitting tube Ø6
- 8 = quick fitting tube Ø8

PILOTING

- 35 = Sol. - Sol.
- 24 = Sol. ext. - Sol. ext.

COIL VOLTAGE

- 01 = 12V DC
- 02 = 24V DC
- 05 = 24V AC
- 06 = 110V AC
- 07 = 220V AC
- 08 = 24V DC 1 Watt
- 09 = 24V DC Earth Faston
- 11 = 12V DC Downward
- 12 = 24V DC Downward
- 15 = 24V AC Downward
- 16 = 110V AC Downward
- 17 = 220V AC Downward
- 18 = 24V DC 1 Watt Downward
- 19 = 24V DC Earth Faston Downward



Weight gr. 175
Minimum working pressure 1,5 bar



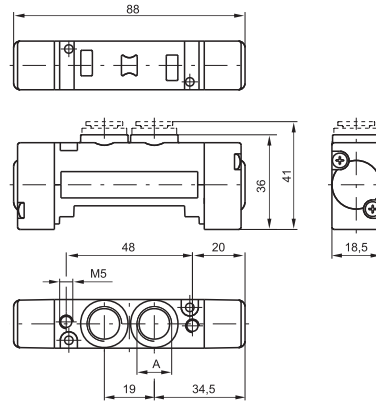
For dimension "A" see ordering code

Operational characteristic

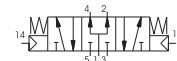
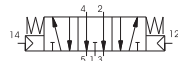
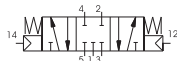
Fluid	Max working pressure (bar)	Temperature °C		Flow rate at 6 bar with Δp=1 (NI/min)	Orifice size (mm)	Working ports size	Pilot ports size
		Min. -5°C	Max. +50°C				
Filtered and lubricated air or not	10 bar	Min. -5°C	Max. +50°C	800 NI/min	mm 7	G1/8"-G1/4" tube Ø6-tube Ø8	M5

Pneumatic - Pneumatic

Ordering code
243C.53.F.18
CONNECTIONS "A"
1 = G1/4"
5 = G1/8"
6 = quick fitting tube Ø6
8 = quick fitting tube Ø8
FUNCTION
31 = Closed centres
32 = Open centres
33 = Pressured centres



Weight gr. 115
Minimum working pressure 3 bar

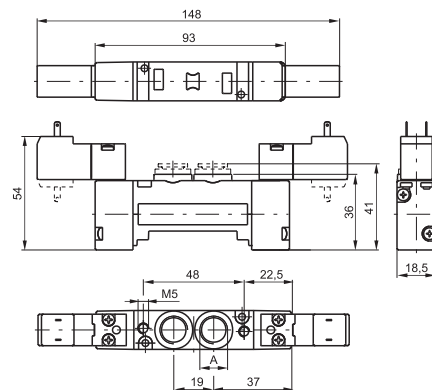


For dimension "A" see ordering code

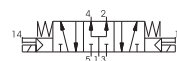
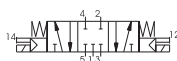
Operational characteristic	Fluid	Max working pressure (bar)	Temperature °C		Flow rate at 6 bar with Δp=1 (NI/min)	Orifice size (mm)	Working ports size	Pilot ports size
		Filtered and lubricated air or not	10 bar	Min. -5°C	Max. +50°C	650 NI/min	mm 7	G1/8"-G1/4" tube Ø6-tube Ø8

Miniature solenoid - Miniature solenoid

Ordering code
243C.53.F.P.V
CONNECTIONS "A"
1 = G1/4"
5 = G1/8"
6 = quick fitting tube Ø6
8 = quick fitting tube Ø8
FUNCTION
31 = Closed centres
32 = Open centres
33 = Pressured centres
PILOTING
24 = Sol. ext. - Sol. ext.
35 = Sol. - Sol.
COIL VOLTAGE
01 = 12V DC
02 = 24V DC
05 = 24V AC
06 = 110V AC
07 = 220V AC
08 = 24V DC 1 Watt
09 = 24V DC Earth Faston
11 = 12V DC Downward
12 = 24V DC Downward
15 = 24V AC Downward
16 = 110V AC Downward
17 = 220V AC Downward
18 = 24V DC 1 Watt Downward
19 = 24V DC Earth Faston Downward



Weight gr. 185
Minimum working pressure 3 bar



For dimension "A" see ordering code

Operational characteristic	Fluid	Max working pressure (bar)	Temperature °C		Flow rate at 6 bar with Δp=1 (NI/min)	Orifice size (mm)	Working ports size
		Filtered and lubricated air or not	10 bar	Min. -5°C	Max. +50°C	650 NI/min	mm 7



Pneumatic - Pneumatic

Ordering code

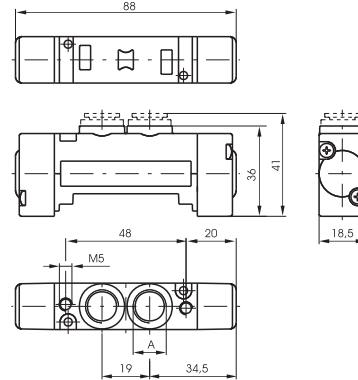
243C.62.P.18

CONNECTIONS "A"

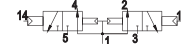
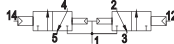
- 1 = G1/4"
- 5 = G1/8"
- 6 = quick fitting tube Ø6
- 8 = quick fitting tube Ø8

PILOTING

- 44 = 2 Coils 3/2 NC
- 45 = 1 Coil 3/2 NC (14) + 1 Coil 3/2 NO (12)
- 55 = 2 Coils 3/2 NO
- 54 = 1 Coil 3/2 NO (14) + 1 Coil 3/2 NC (12)



Weight gr. 110
Minimum working pressure 3 bar



For dimension "A" see ordering code

Operational characteristic	Fluid	Max working pressure (bar)	Temperature °C		Flow rate at 6 bar with Δp=1 (NI/min)	Orifice size (mm)	Working ports size
	Filtered and lubricated air or not	10 bar	Min. -5°C	Max. +50°C	450 NI/min	mm 7	G1/8"-G1/4" tube Ø6-tube Ø8

Miniature solenoid - Miniature solenoid

Ordering code

243C.62.P.35.V

CONNECTIONS "A"

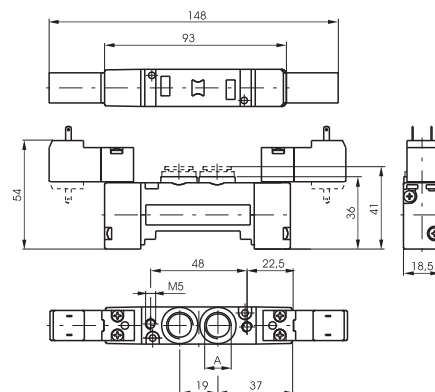
- 1 = G1/4"
- 5 = G1/8"
- 6 = quick fitting tube Ø6
- 8 = quick fitting tube Ø8

PILOTING

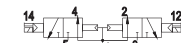
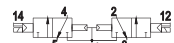
- 44 = 2 Coils 3/2 NC
- 45 = 1 Coil 3/2 NC (14) + 1 Coil 3/2 NO (12)
- 55 = 2 Coils 3/2 NO
- 54 = 1 Coil 3/2 NO (14) + 1 Coil 3/2 NC (12)

COIL VOLTAGE

- 01 = 12V DC
- 02 = 24V DC
- 05 = 24V AC
- 06 = 110V AC
- 07 = 220V AC
- 08 = 24V DC 1 Watt
- 09 = 24V DC Earth Faston
- 11 = 12V DC Downward
- 12 = 24V DC Downward
- 15 = 24V AC Downward
- 16 = 110V AC Downward
- 17 = 220V AC Downward
- 18 = 24V DC 1 Watt Downward
- 19 = 24V DC Earth Faston Downward



Weight gr. 190
Minimum working pressure 3 bar

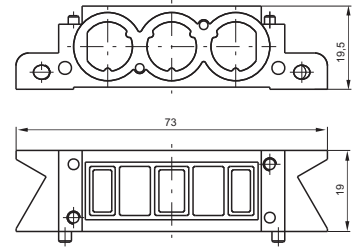


For dimension "A" see ordering code

Operational characteristic	Fluid	Max working pressure (bar)	Temperature °C		Flow rate at 6 bar with Δp=1 (NI/min)	Orifice size (mm)	Working ports size
	Filtered and lubricated air or not	10 bar	Min. -5°C	Max. +50°C	450 NI/min	mm 7	G1/8"-G1/4" tube Ø6-tube Ø8

Modular base

Ordering code
2430.0
VERSION
01 = Modular base
06 = Supply and exhaust closed
07 = Supply closed
08 = Exhaust closed



Blank base

Ordering code
2430.05

Weight gr. 85

Right inlet base

Ordering code
2430.02

Weight gr. 120

Left inlet base

Ordering code
2430.03

Weight gr. 125

Intermediate air intake

Ordering code
2430.10

Weight gr. 30
to be assembled of a valve

Closing plate

Ordering code
2430.00

Weight gr. 20

Diaphragm plug

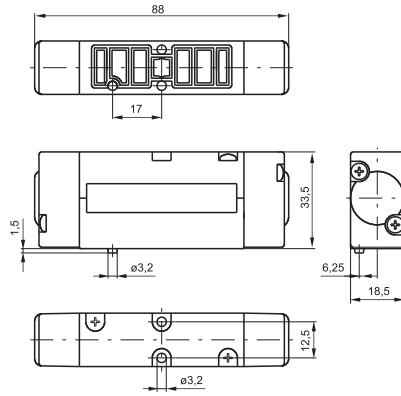
Ordering code
2430.17

Weight gr. 5

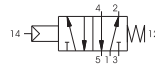
2

Pneumatic - Spring

Ordering code
2445.52.00.19



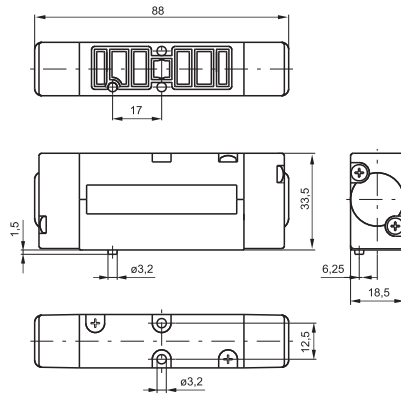
Weight gr. 155
Minimum piloting pressure 2 bar



Operational characteristic	Fluid	Max working pressure (bar)	Temperature °C		Flow rate at 6 bar with $\Delta p=1$ (NI/min)	Orifice size (mm)
	Filtered and lubricated air or not	10 bar	Min. -5°C	Max. +50°C	550 NI/min	mm 5

Pneumatic - Differential / Differential external

Ordering code
2445.52.00.P
PILOTING
P 16 = Pneum. - Diff./al
17 = Pneum. - Diff./al ext.



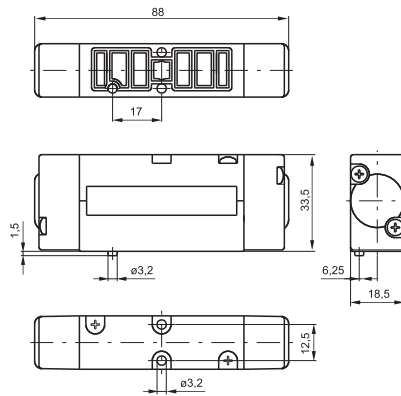
Weight gr. 155
Minimum piloting pressure 2 bar



Operational characteristic	Fluid	Max working pressure (bar)	Temperature °C		Flow rate at 6 bar with $\Delta p=1$ (NI/min)	Orifice size (mm)
	Filtered and lubricated air or not	10 bar	Min. -5°C	Max. +50°C	550 NI/min	mm 5

Pneumatic - Pneumatic

Ordering code
2445.52.00.18



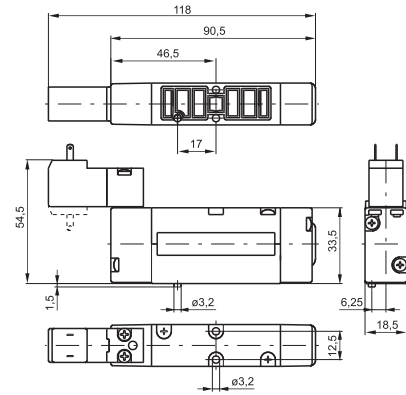
Weight gr. 155
Minimum piloting pressure 1,5 bar



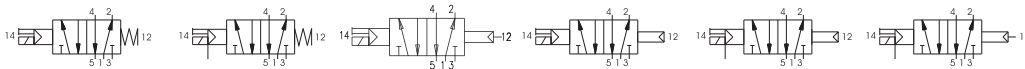
Operational characteristic	Fluid	Max working pressure (bar)	Temperature °C		Flow rate at 6 bar with $\Delta p=1$ (NI/min)	Orifice size (mm)
	Filtered and lubricated air or not	10 bar	Min. -5°C	Max. +50°C	550 NI/min	mm 5

Miniature solenoid - Spring / Differential

Ordering code	
244T.52.00.P.V	
TYPE ELECTROPILOT EXHAUST	
T	1=on base (only for self feeding valves) 5=on pilot (for all version)
PILOTING	
P	39 = Sv. - Spring 29 = Sv. ext. - Spring 36 = Sv. - Diff./al 37 = Sv. - Diff./al ext. 26 = Sv. ext. - Differ. 27 = Sv. ext. - Differ. ext.
COIL VOLTAGE	
V	01 = 12V DC 02 = 24V DC 05 = 24V AC 06 = 110V AC 07 = 220V AC 08 = 24V DC 1 Watt 09 = 24V DC Earth Faston 11 = 12V DC Downward 12 = 24V DC Downward 15 = 24V AC Downward 16 = 110V AC Downward 17 = 220V AC Downward 18 = 24V DC 1 Watt Downward 19 = 24V DC Earth Faston Downward



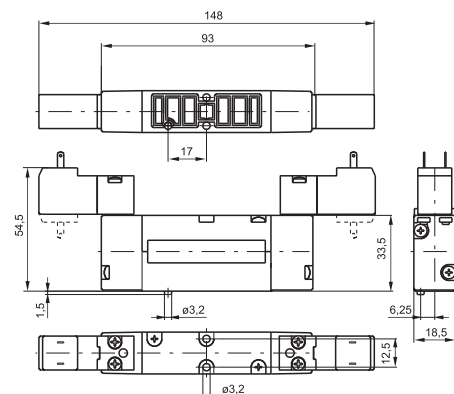
Miniature solenoid - Spring / Differential: Weight gr. 190 - Minimum working pressure 2



Operational characteristic	Fluid	Max working pressure (bar)	Temperature °C		Flow rate at 6 bar with Δp=1 (NI/min)	Orifice size (mm)
		Filtered and lubricated air or not	10 bar	Min. -5°C	Max. +50°C	550 NI/min

Miniature solenoid - Miniature solenoid

Ordering code	
244T.52.00.P.V	
TYPE ELECTROPILOT EXHAUST	
T	1=on base (only for self feeding valves) 5=on pilot (for all version)
PILOTING	
P	35 = Sv. - Sv. 24 = Sv. ext. - Sv. ext.
COIL VOLTAGE	
V	01 = 12V DC 02 = 24V DC 05 = 24V AC 06 = 110V AC 07 = 220V AC 08 = 24V DC 1 Watt 09 = 24V DC Earth Faston 11 = 12V DC Downward 12 = 24V DC Downward 15 = 24V AC Downward 16 = 110V AC Downward 17 = 220V AC Downward 18 = 24V DC 1 Watt Downward 19 = 24V DC Earth Faston Downward



Miniature solenoid - Miniature solenoid: Weight gr. 225 - Minimum working pressure 1,5 bar



Operational characteristic	Fluid	Max working pressure (bar)	Temperature °C		Flow rate at 6 bar with Δp=1 (NI/min)	Orifice size (mm)
		Filtered and lubricated air or not	10 bar	Min. -5°C	Max. +50°C	550 NI/min

2

Pneumatic - Pneumatic

Ordering code

244T.53.F.18

TYPE ELECTROPILOT EXHAUST

T 1=on base (only for self feeding valves)

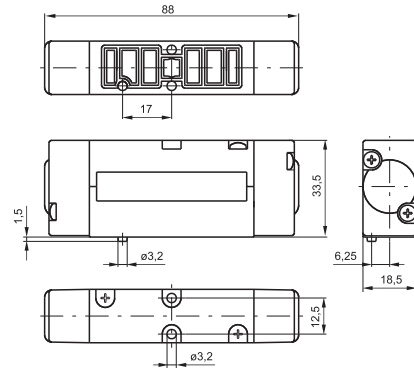
5=on pilot (for all version)

FUNCTION

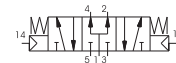
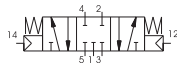
F 31 = Closed centres

32 = Open centres

33 = Pressured centres



Weight gr. 165
Minimum working pressure 3 bar



Operational characteristic

Operational characteristic	Fluid	Max working pressure (bar)	Temperature °C		Flow rate at 6 bar with Δp=1 (Nl/min)	Orifice size (mm)
	Filtered and lubricated air or not		10 bar	Min. -5°C	Max. +50°C	550 Nl/min

Miniature solenoid - Miniature solenoid

Ordering code

244T.53.F.P.V

TYPE ELECTROPILOT EXHAUST

T 1=on base (only for self feeding valves)

5=on pilot (for all version)

FUNCTION

F 31 = Closed centres

32 = Open centres

33 = Pressured centres

PILOTING

P 35 = Sv. - Sv.

24 = Sv. ext. - Sv. ext.

COIL VOLTAGE

01 = 12V DC

02 = 24V DC

05 = 24V AC

06 = 110V AC

07 = 220V AC

08 = 24V DC 1 Watt

V 09 = 24V DC Earth Faston

11 = 12V DC Downward

12 = 24V DC Downward

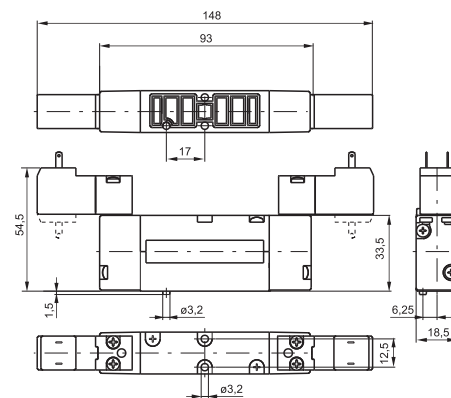
15 = 24V AC Downward

16 = 110V AC Downward

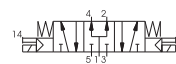
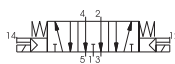
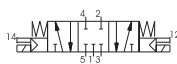
17 = 220V AC Downward

18 = 24V DC 1 Watt Downward

19 = 24V DC Earth Faston Downward



Weight gr. 235
Minimum working pressure 3 bar



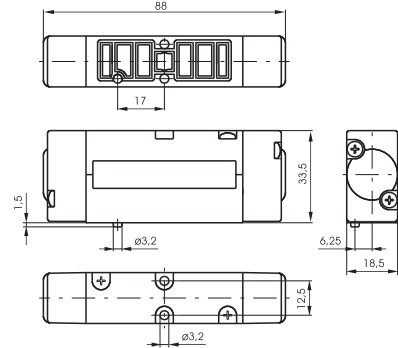
Operational characteristic

Operational characteristic	Fluid	Max working pressure (bar)	Temperature °C		Flow rate at 6 bar with Δp=1 (Nl/min)	Orifice size (mm)
	Filtered and lubricated air or not		10 bar	Min. -5°C	Max. +50°C	550 Nl/min

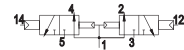
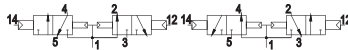
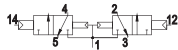


Pneumatic - Pneumatic

Ordering code
2445.62.F.18
FUNCTION
44 = 2 Coils 3/2 NC
45 = 1 Coil 3/2 NC (14) + 1 Coil 3/2 NO (12)
55 = 2 Coils 3/2 NO
54 = 1 Coil 3/2 NO (14) + 1 Coil 3/2 NC (12)



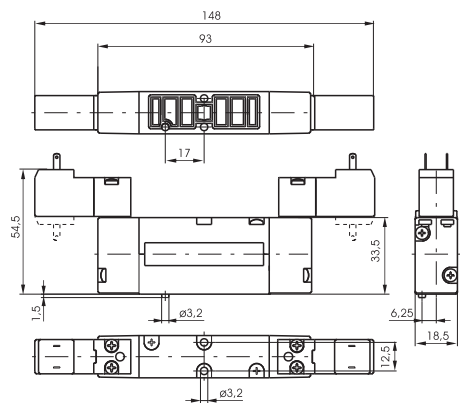
Weight gr. 170
Minimum working pressure 3 bar



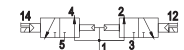
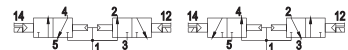
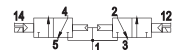
Operational characteristic	Fluid	Max working pressure (bar)	Temperature °C		Flow rate at 6 bar with Δp=1 (NI/min)	Orifice size (mm)
		Filtered and lubricated air or not	10 bar	Min. -5°C	Max. +50°C	450 NI/min

Miniature solenoid - Miniature solenoid

Ordering code
2445.62.F.35.V
FUNCTION
44 = 2 Coils 3/2 NC
45 = 1 Coil 3/2 NC (14) + 1 Coil 3/2 NO (12)
55 = 2 Coils 3/2 NO
54 = 1 Coil 3/2 NO (14) + 1 Coil 3/2 NC (12)
COIL VOLTAGE
01 = 12V DC
02 = 24V DC
05 = 24V AC
06 = 110V AC
07 = 220V AC
08 = 24V DC 1 Watt
09 = 24V DC Earth Faston
11 = 12V DC Downward
12 = 24V DC Downward
15 = 24V AC Downward
16 = 110V AC Downward
17 = 220V AC Downward
18 = 24V DC 1 Watt Downward
19 = 24V DC Earth Faston Downward



Weight gr. 250
Minimum working pressure 3 bar



Operational characteristic	Fluid	Max working pressure (bar)	Temperature °C		Flow rate at 6 bar with Δp=1 (NI/min)	Orifice size (mm)
		Filtered and lubricated air or not	10 bar	Min. -5°C	Max. +50°C	450 NI/min



Modular base

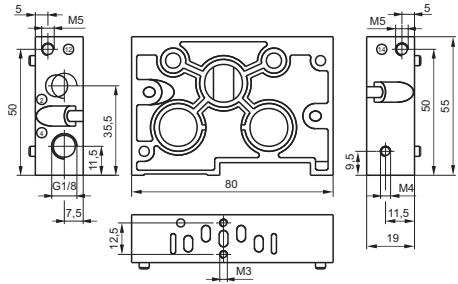
Ordering code

2440.V

VERSION

01 = standard base

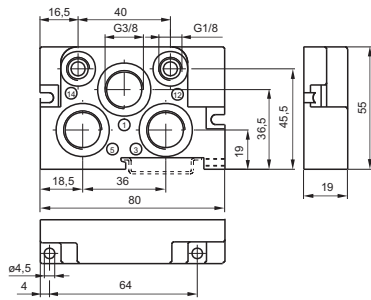
11 = Modular base for single separate inlet



Weight gr. 110

* Used to supply a single spool valve with an external pilot signal. Threaded ports 12 and 14 are connected to the valve via the base / valve interface, while the cross sectional drillings in the base are blanked off.*

Right inlet base

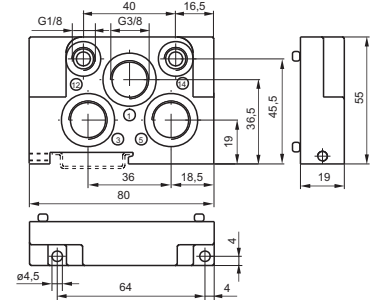


Ordering code

2440.02

Weight gr. 110

Left inlet base

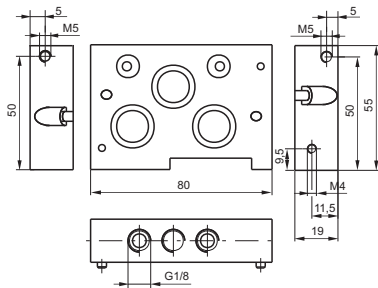


Ordering code

2440.03

Weight gr. 110

Intermediate air intake

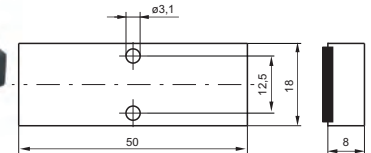


Ordering code

2440.10

Weight gr. 185

Closing plate



Ordering code

2440.00

Weight gr. 185

Diaphragm plug

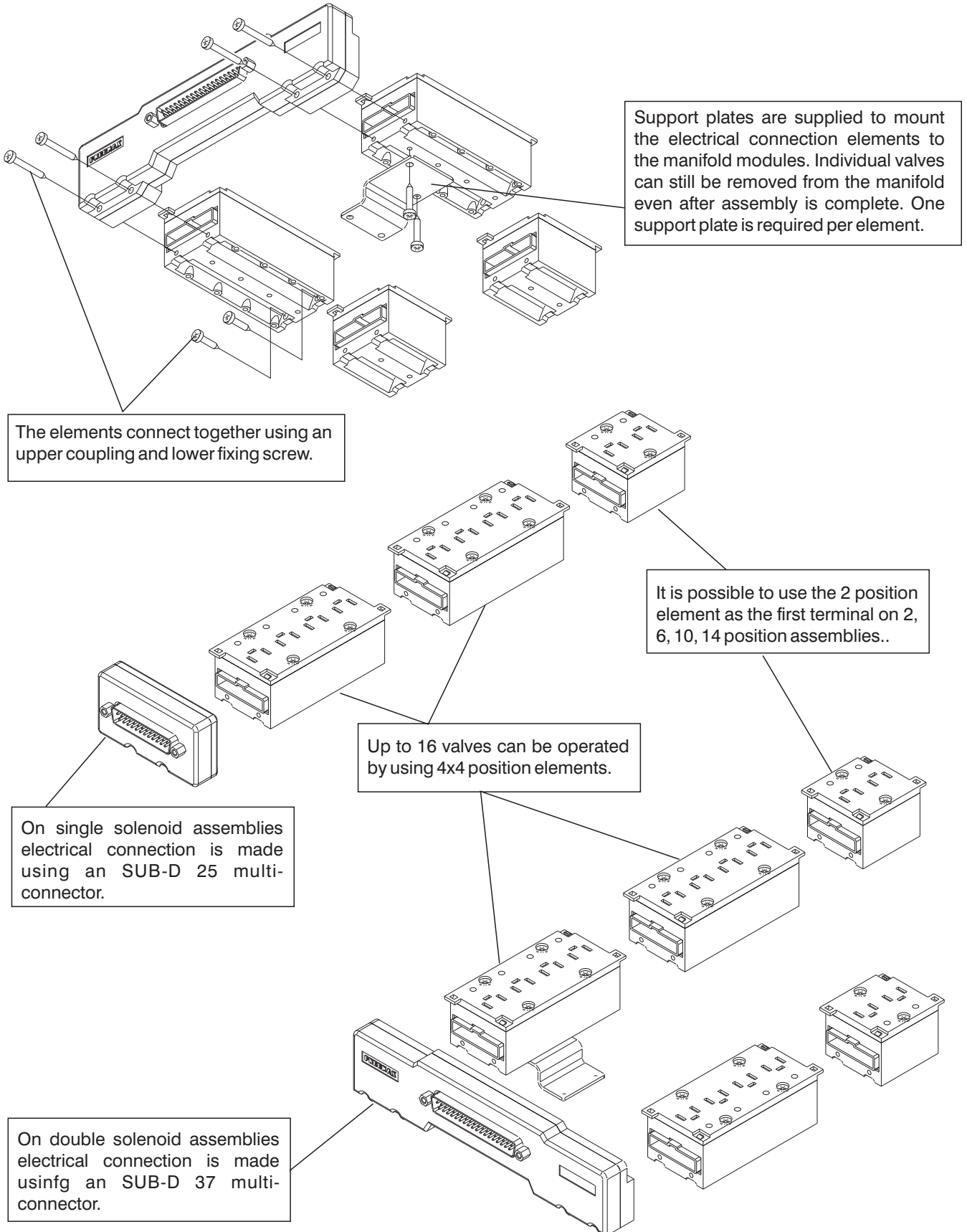
Ordering code

2440.17





The integral electrical design for the series 2400 valve is extremely flexible, allowing the production of pre-wired solenoid valve manifolds, the configuration of which can be determined at the point of assembly. The 24 VDC, 12 VDC (equivalent PNP) and 24 VAC* modules are available with 2 or 4 positions. The system assembled is designed for an IP40 protection. IP65 is available on request.


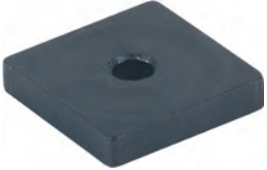
* Attention : If the working tension is 24 VAC DO NOT using modules with protection diode







2

4 positions module	Ordering code	2 positions module												
	2400.P.T													
	<table border="1"> <tr><td>PLACES</td></tr> <tr><td>P 04 = 4 Places</td></tr> <tr><td>02 = 2 Places</td></tr> <tr><td>TYPE</td></tr> <tr><td>00 = Left IP40-PNP</td></tr> <tr><td>02 = Left IP40-PNP with protection diode PNP*</td></tr> <tr><td>10 = Left IP65-PNP</td></tr> <tr><td>12 = Left IP65-PNP with protection diode*</td></tr> <tr><td>T 01 = Right IP40-PNP</td></tr> <tr><td>03 = Right IP40-PNP with protection diode*</td></tr> <tr><td>11 = Right IP65-PNP</td></tr> <tr><td>13 = Right IP65-PNP with protection diode*</td></tr> </table>	PLACES	P 04 = 4 Places	02 = 2 Places	TYPE	00 = Left IP40-PNP	02 = Left IP40-PNP with protection diode PNP*	10 = Left IP65-PNP	12 = Left IP65-PNP with protection diode*	T 01 = Right IP40-PNP	03 = Right IP40-PNP with protection diode*	11 = Right IP65-PNP	13 = Right IP65-PNP with protection diode*	
PLACES														
P 04 = 4 Places														
02 = 2 Places														
TYPE														
00 = Left IP40-PNP														
02 = Left IP40-PNP with protection diode PNP*														
10 = Left IP65-PNP														
12 = Left IP65-PNP with protection diode*														
T 01 = Right IP40-PNP														
03 = Right IP40-PNP with protection diode*														
11 = Right IP65-PNP														
13 = Right IP65-PNP with protection diode*														
Weight gr. 50 * only for VDC		Weight gr. 30 * only for VDC												

37 contacts front connector IP65		25 contacts front connector IP65	
Ordering code		Ordering code	
2400.37.10		2400.25.10	
Weight gr. 120 - IP 65 protection grade is achieved using the IP65 Pneu-		Weight gr. 40 - IP 65 protection grade is achieved using the IP65 Pneu-	

Plug		Closing plate electrical positions	
Ordering code		Ordering code	
2400.00		2400.15.00	
Weight gr. 5		Weight gr. 2	

VDMA support plate		FLAT support plate	
Ordering code		Ordering code	
2440.50		2430.50	
Weight gr. 20		Weight gr. 20	

4 positions box with 25 contacts connector		15mm male connector with 2 metres cable	
Ordering code		Ordering code	
2400.04.25		2400.15.02	
Weight gr. 65		Weight gr. 98	

In line cable complete with connector IP40

Ordering code
2400.T.L.00
CONNECTOR TYPE
T 25 = 25 contacts
37 = 37 contacts
CABLE LENGTH
L 03 = 3 meters
05 = 5 meters
10 = 10 meters

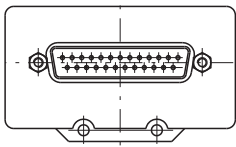
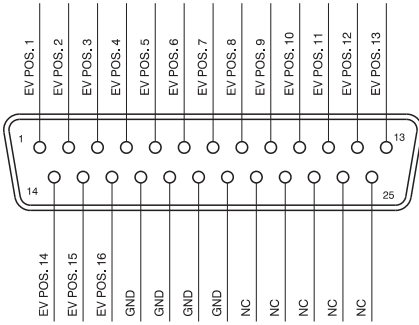


In line

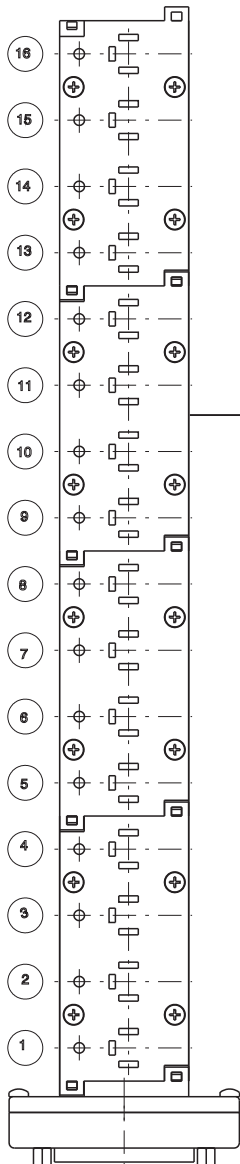
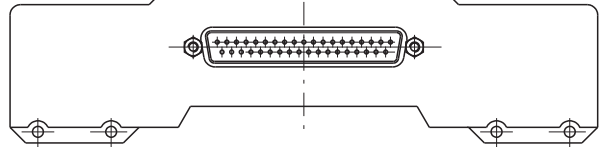
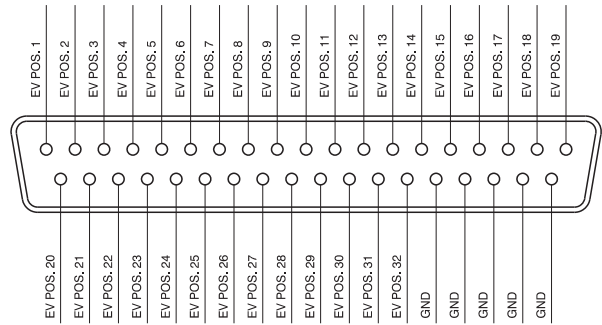
Ordering code
2400.T.L.C
CONNECTOR TYPE
T 25 = 25 contacts
37 = 37 contacts
CABLE LENGTH
L 03 = 3 meters
05 = 5 meters
10 = 10 meters
CONNECTOR
C 10 = In line
90 = a 90°



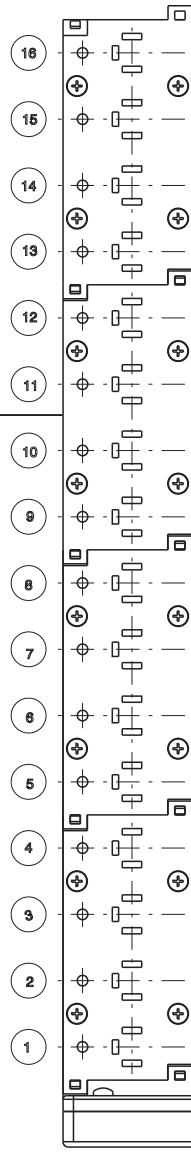
**SUB-D 25 CONTACTS
CONNECTOR**



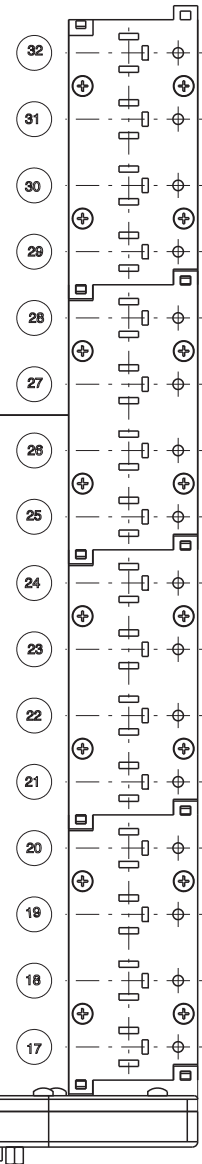
**SUB-D 37 CONTACTS
CONNECTOR**



Left modules



Right modules



2