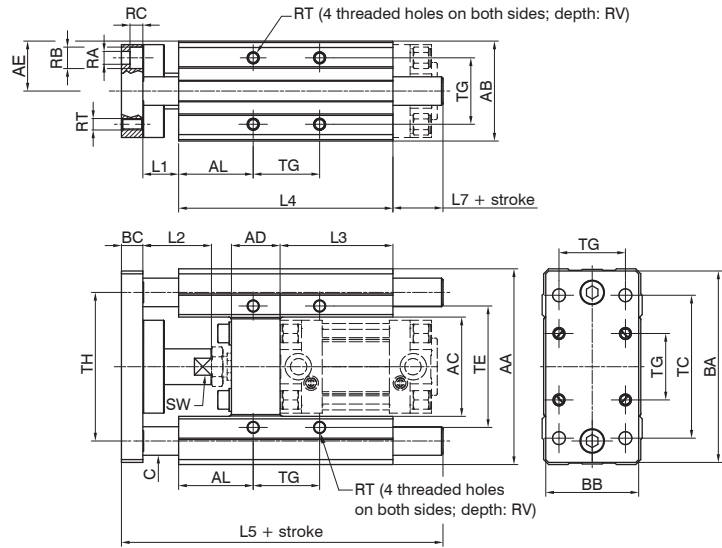
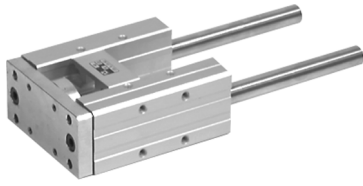


Linear guiding units for ISO1552 Cylinders with sintered bronze rod bushings

Coding: 1320.Ø.stroke.GLB
(Cylinders must be ordered separately)



Standard strokes

- Ø32 100 - 150 - 200 - 250 - 300 mm
 - Ø40 100 - 150 - 200 - 250 - 300 - 350 mm
 - Ø50 100 - 150 - 200 - 250 - 300 - 350 - 400 - 450 mm
 - Ø63 100 - 150 - 200 - 250 - 300 - 350 - 400 - 450 - 500 mm
 - Ø80 100 - 150 - 200 - 250 - 300 - 350 - 400 - 450 - 500 - 550 mm
- On request are available strokes up to: 2800 mm

Bore	Weight (g)				
	32	40	50	63	80
stroke 100	1720	2900	4700	6000	11300
each 50mm	91	159	159	250	380

Sensor clamps and brackets for 1319-1320 series:

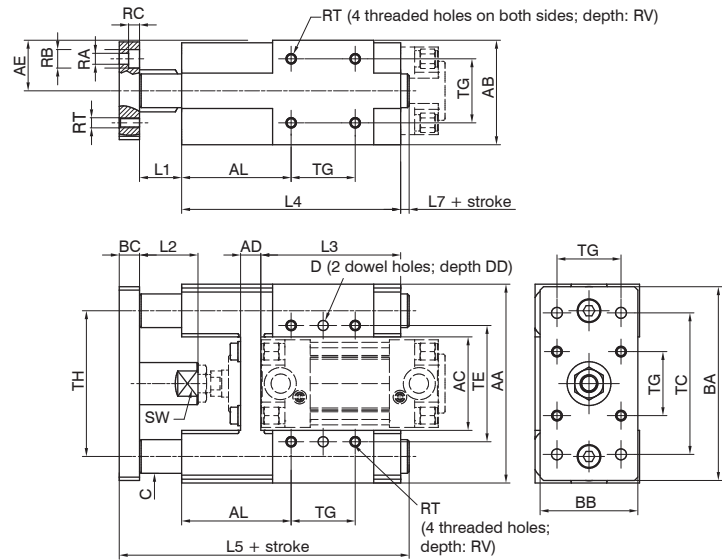
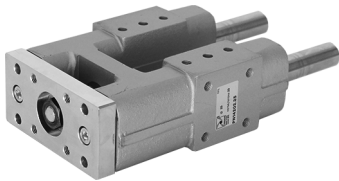
Use standard sensors and brackets on the rear and following special brackets on front of cylinders for use sensors codes 1500_., RS_., HS_ which have the following ordering codes:

- 1320.AGL sensor bracket for cylinders Ø32 and Ø40
- 1320.BGL sensor bracket for cylinders Ø50 and Ø63
- 1320.CGL sensor bracket for cylinders Ø80

3

Linear guiding units for ISO1552 Cylinders with recirculating ball bearings guides

Coding: 1320.Ø.stroke.GLC
(Cylinders must be ordered separately)



Standard strokes

- Ø32 100 - 150 - 200 - 250 - 300 mm
 - Ø40 100 - 150 - 200 - 250 - 300 - 350 mm
 - Ø50 100 - 150 - 200 - 250 - 300 - 350 - 400 - 450 mm
 - Ø63 100 - 150 - 200 - 250 - 300 - 350 - 400 - 450 - 500 mm
 - Ø80 100 - 150 - 200 - 250 - 300 - 350 - 400 - 450 - 500 - 550 mm
- On request are available strokes up to: 2800 mm

Bore	Weight (g)				
	32	40	50	63	80
stroke 100	3100	3050	6350	6200	15500
each 50mm	246		385		455

Sensor clamps and brackets for 1319-1320 series:

Use standard sensors and brackets on the rear and following special brackets on front of cylinders for use sensors codes 1500_., RS_., HS_ which have the following ordering codes:

- 1320.AGL sensor bracket for cylinders Ø32 and Ø40
- 1320.BGL sensor bracket for cylinders Ø50 and Ø63
- 1320.CGL sensor bracket for cylinders Ø80

Table of dimensions

	Bore	AA	AB	AE	AC	AD	AL	BA	BB	BC	C	ØD	DD	RA	RB	RC	RT	RV	TE	TC	TG	TH	L1	L2	L3	L4	L5	L7	SW
Bushings (GLB)	32	97	49	28,5	50	24	44,7	93	45	12	12			6,6	11	6,5	M6	12	61	78	32,5	74	25	39	76	125	187	25	15
	40	115	58	29	57,5	28	48	112	55	12	16			6,6	11	6,5	M6	14	69	84	38	87	25	44	81	140	207	30	15
	50	137	70	35	69,5	34	52,2	134	65	15	20			9	15	9	M8	16	85	100	46,5	104	25	48	79	150	225	35	22
	63	152	85	42,5	84,5	34	55,7	149	80	15	20			9	15	9	M8	16	100	105	56,5	119	25	48	111	182	242	20	22
	80	189	105	52,5	106	34	66	180	100	20	25			11	18	11	M10	20	130	130	72	148	25	53	128	215	302	42	27
Bearings (GLC)	32	118	63	30	51	12	65	115	58	12	20	6	12	6,5	11	6,5	M6	12	69	84	38	84	25	35	83	130	172	5	20
	40	118	63	30	55,5	12	65	115	58	12	20	6	12	6,5	11	6,5	M6	12	69	84	38	86,5	25	35	83	130	172	5	20
	50	155	85,5	42,5	70	16	80	153	80	15	25	6	12	9	15	9	M8	16	100	112	56,5	112	25	35	106,5	165	210	5	24
	63	155	85,5	42,5	78	16	80	153	80	15	25	6	12	9	15	9	M8	16	100	112	56,5	116	25	35	106,5	165	210	5	24
80-100	214	133	66,5	122	39,5	115	213	130	15	30	8	13	11	17	10,5	M10	15	176	176	89	168	20	55	160,5	260	300	5	24	